



**NATIONAL WATERWAYS
FOUNDATION**

**A Strong Inland Waterways
System Delivers a Stronger
American Economy**

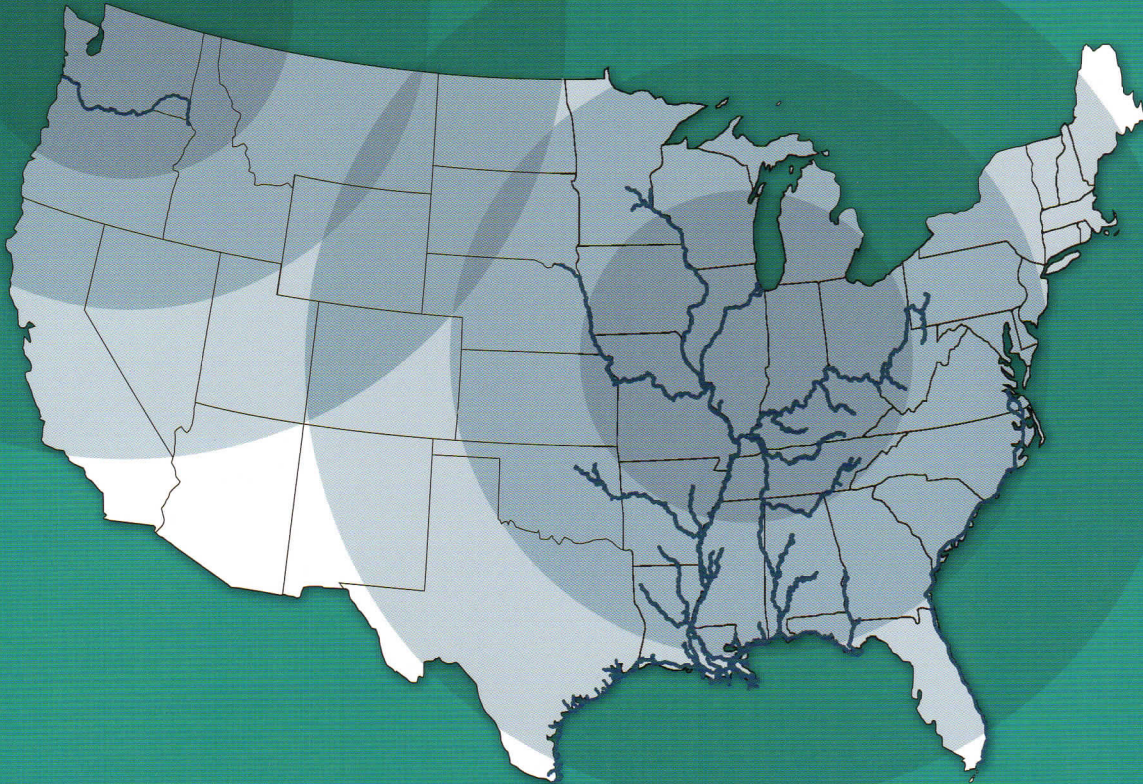


Our Inland Waterways System Delivers Cargoes and American Jobs

Our inland waterways system transports cargoes that support our daily lives. As a result of the transportation option the waterways offer, hundreds of thousands of American jobs are created and sustained across a variety of industries.

- Agriculture
- Construction
- Petroleum
- Chemical
- Energy
- Steel

The inland waterways system provides vast opportunities for shippers to move their products from the farm, quarry, oil field or industrial plant to the world's markets in the safest, most fuel-efficient, environmentally responsible, and economically viable manner.



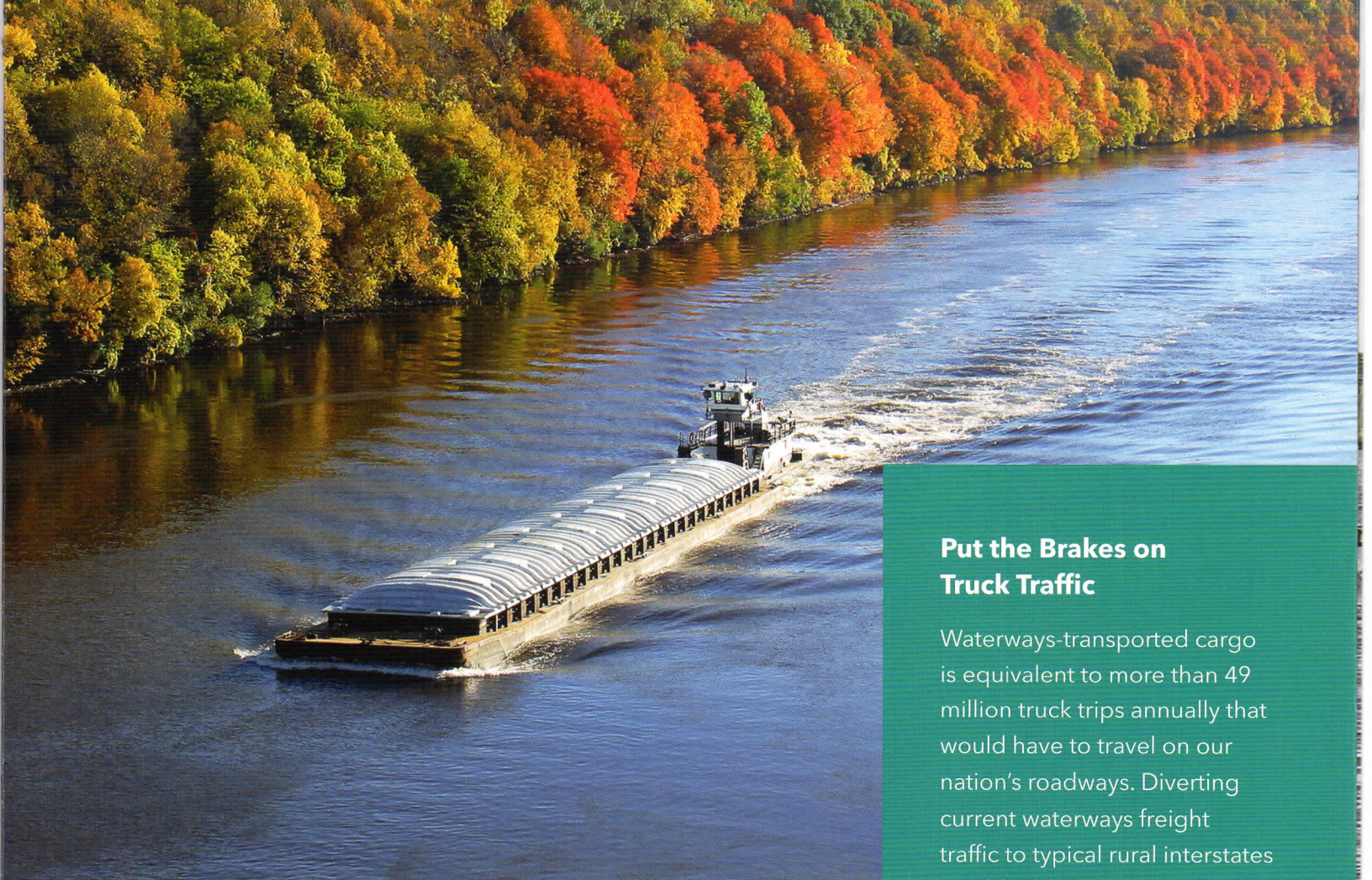
Inland Waterways System

12,000 miles of commercially navigable waterways move commerce to and from 38 states, serve industrial and agricultural centers, and facilitate imports and exports at gateway ports on the Gulf Coast.



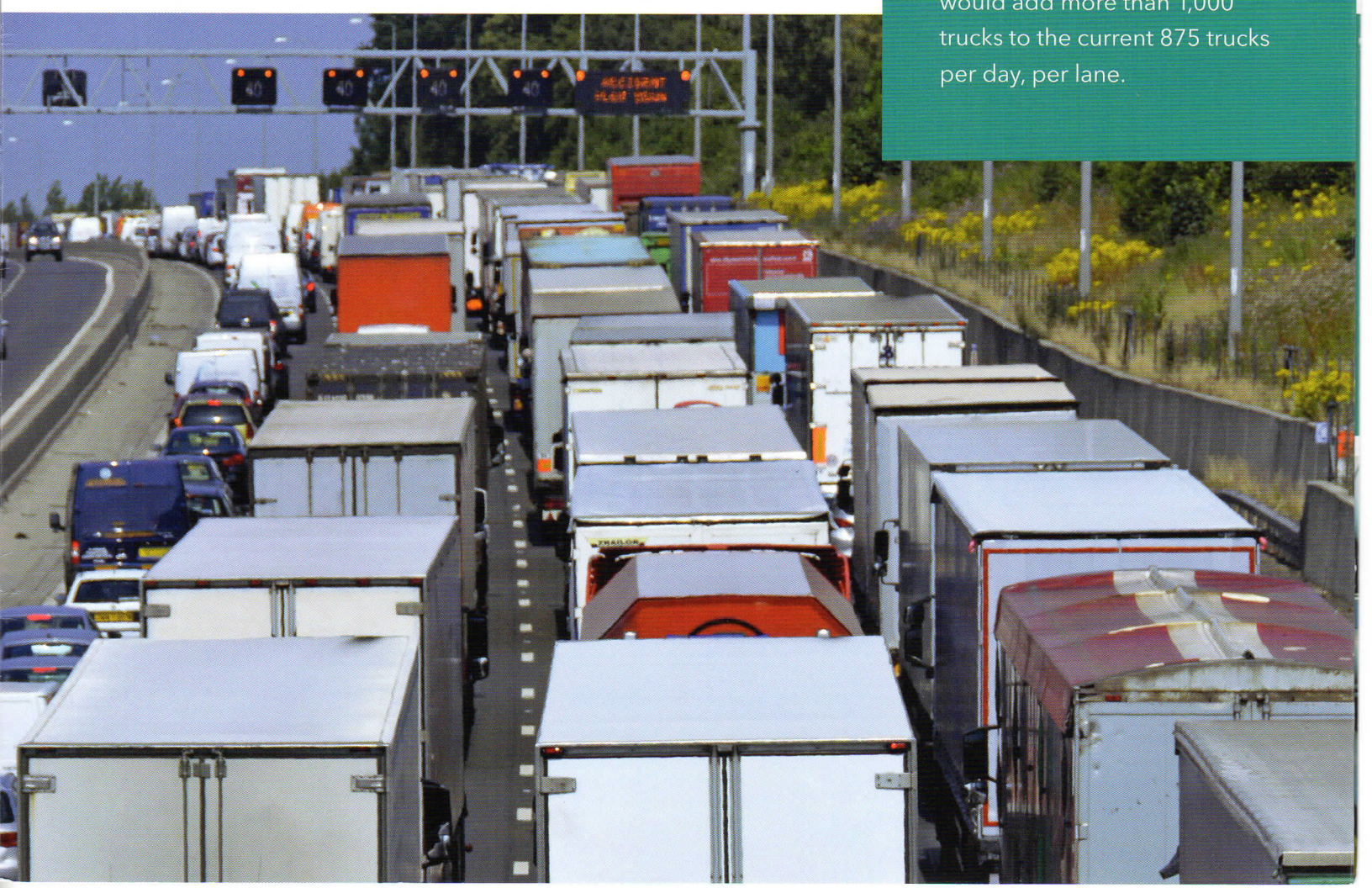
SUPPORTING AGRICULTURE, GROWING COMMUNITIES

Farmers rely on inland waterways barge transportation to move their crops to shipping ports and the global market. Family farmers thrive from the transportation advantage our waterways provide. America's agriculture exports boost the economy, benefitting all of us.



Put the Brakes on Truck Traffic

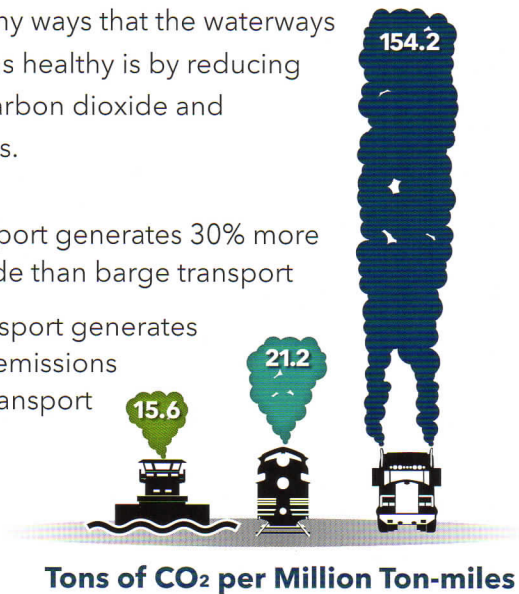
Waterways-transported cargo is equivalent to more than 49 million truck trips annually that would have to travel on our nation's roadways. Diverting current waterways freight traffic to typical rural interstates would add more than 1,000 trucks to the current 875 trucks per day, per lane.



Cleaner Air Today is the Foundation for a Brighter Future

One of the many ways that the waterways keep Americans healthy is by reducing emissions of carbon dioxide and other pollutants.

- Railway transport generates 30% more carbon dioxide than barge transport
- Highway transport generates 1000% more emissions than barge transport



New Jobs in a Healthy Economy

The economic impact of expediting construction to complete a group of congressionally authorized lock modernization projects in 10 years versus the current estimate of over 20 years would be the creation of 15,000 new jobs with an annual economic return of \$800 million.



Half-million Jobs Made Possible

A significant share of the country's population works along our inland water routes in more than **541,000 inland waterways system-related jobs worth \$29 billion**. These jobs power the economy across the nation. The inland waterways impact busy ports receiving barge shipments, manufacturers processing raw materials, refineries preparing chemicals and petroleum products, conservation managers and planners, and a myriad of other companies, services, and suppliers.



KEEPING OTHER MODES MOVING

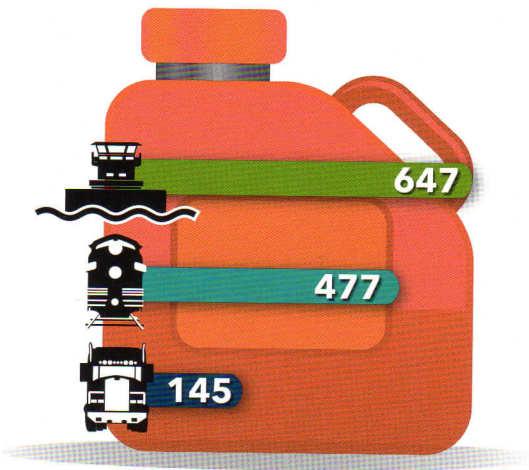
Barges on our inland waterways carry salt and sand that treat icy roads, providing safer driving for everyone. Airplanes and airport runways depend on de-icer formula supplied by tank barge. Ample capacity on the waterways means that barges can carry more of America's cargo, even if other modes can't.

Fuel-efficient Delivery That Benefits Our Environment and Relieves Traffic Congestion

As traffic congestion on highways worsens, waterways are more important than ever to facilitate freight transportation. They are reliable, less congested, and tout the smallest carbon footprint among transportation modes.

- Barges can move one ton of cargo 647 miles on a single gallon of fuel
- Barge transport alleviates highway traffic congestion and emits fewer pollutants to move the same cargo

Barge Transportation on Our Waterways is the Most Fuel Efficient Form of Surface Transportation



Ton-miles Traveled per Gallon of Fuel

Essential to Economic Strength and America's Transportation Supply Chain

The journey for more than half of our nation's grain exports, and nearly a quarter of its petroleum products and electric power generation relies on the inland waterways transportation system. The average cost savings over truck and rail shipment means waterways save the nation's businesses over \$12 billion annually in transportation costs.

In today's economy, these supply chain efficiencies are critical as companies carefully optimize resources and strive to maintain economic competitiveness.



MOVING AMERICA'S COMMODITIES

Barges carry everyday products for families across the nation. One barge can carry wheat in amounts large enough to make millions of loaves of bread, or gasoline to satisfy a year's worth of fuel for thousands of cars.